

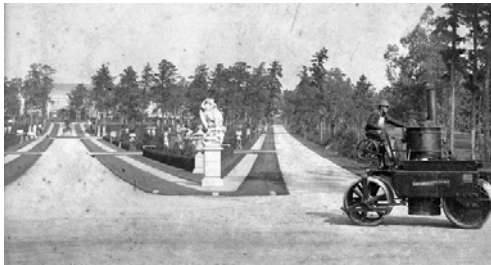
GEORGIAN COURT UNIVERSITY Project Description:

*Cultural Landscape Report with
Comprehensive Master Plan*
Lakewood, New Jersey
Georgian Court University

Project Data

Date: 2006-2007
Size: 150 acres
Context: 60 miles south of New
York City

Georgian Court University was once the estate of George Jay Gould, the eldest son of Jay Gould, financier and railroad magnate. The original estate, 1896-1898, was designed by Architect Bruce Price and contained 200 acres. Mr. Price, designed all of the original buildings in the English Georgian style and the original landscape. Today, the designed landscape includes an Italian Garden and Apollo fountain, a Sunken Garden and Lagoon, a Formal Garden, and a Japanese Garden. In 1923, the Sisters of Mercy acquired the estate and established a college, which became this University in 2004. The campus is listed on the State and National Register of Historic Places and has been designated as National Historic Landmark. Internal pressures to expand campus facilities and student services, as well as private developers to purchase the University outright, has initiated the need to develop a Comprehensive Master Plan that is forward thinking while respecting and restoring Gould's historic estate.



Historic view of the Italian garden



Apollo Fountain

The project's major objectives included the preparation of an Existing Conditions Assessment for the Historic Campus Core. Our team of consultants analyzed the building envelopes for maintaining original historic fabric, developed a restoration methodology for the character-defining landscape features, and developed a comprehensive master plan that balances history, use, and maintainability while framing a vision for the future for the historic campus core. The final Plan will assist the University in making informed capital expenditures and act as a road map for future preservation, conservation, restoration, and rehabilitation work on the buildings and site. All of our work followed the guidelines established by *The Secretary of the Interior's Standards and Treatments of Historic Properties* prepared by the National Park Service, 1996.



The Sunken Garden and Lagoon



The Lagoon from within the Sunken Garden