

LONGFELLOW MUNICIPAL CENTER

Preservation Plan:

Part I - Historical Research

Town of Millville, Massachusetts

Project Data

Date: 1999

Size: 2.5 acres

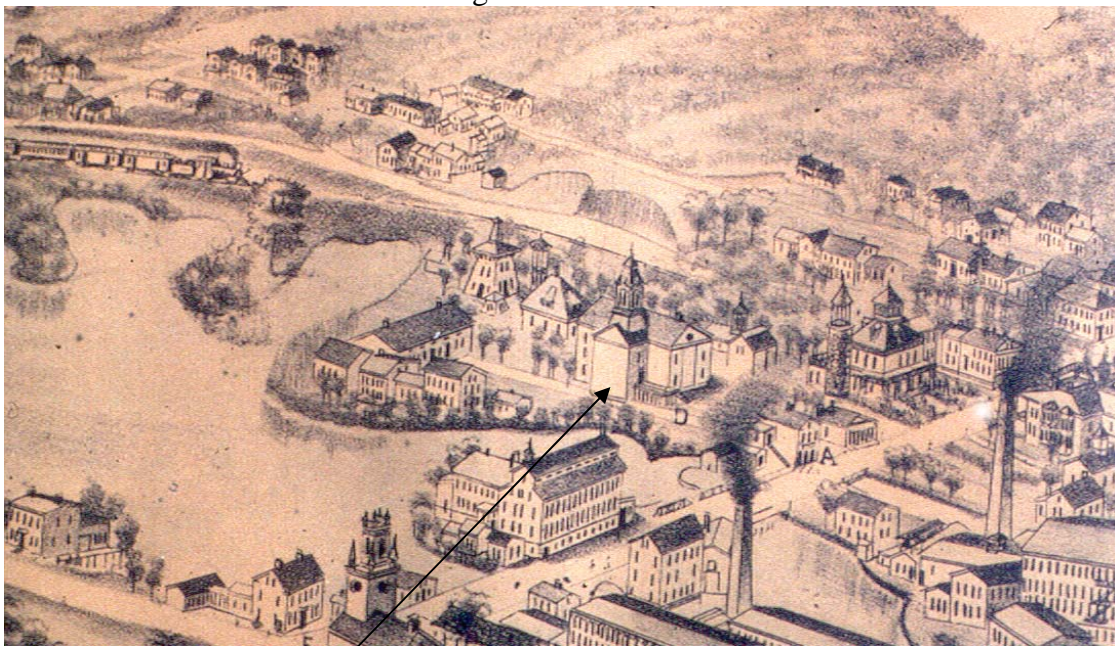
Context: Blackstone River Valley –
Historic Milltown

Project Description:

The purpose of the project was to research, document and prepare plans for rehabilitating this historic landscape, whose history is entangled with the rise and fall of our country's industrial revolution. In 1850, a two-story, two-room schoolhouse was built in an effort to improve the physical conditions of schools in "Millville." Since then, many additions and improvements have occurred. In 1993, renovations were completed and the Town offices moved into the old school, thereby creating the new Town of Millville Municipal Center.

The historic integrity of the site lies within its structures; the Longfellow School (1850), the Udor Tower (c. 1880), the Grist Mill Stone (1727), a landscape archaeological site (Fletcher Area) and four abutting residences (1831-1898), all of which have been recommended for listing in the National Register of Historic Places. The Blackstone River, which is adjacent to the site and flows south from Worcester, Massachusetts into Providence, Rhode Island, has played an integral part of Millville's early milling activities and now provides numerous recreational opportunities. Millville is located within the Blackstone River Valley National Heritage Corridor. The W.P.A. worked to improve the site's playground and recreational opportunities between 1939 and 1941, much of which remains. The Longfellow site, with its historic integrity and central location, continues to provide the Town with important community functions.

EDC Principal Thomas Elmore was Project Manger and conducted the historic landscape research portion of the project prior to leaving the firm of record.



Longfellow School

Bird's Eye – circa 1870